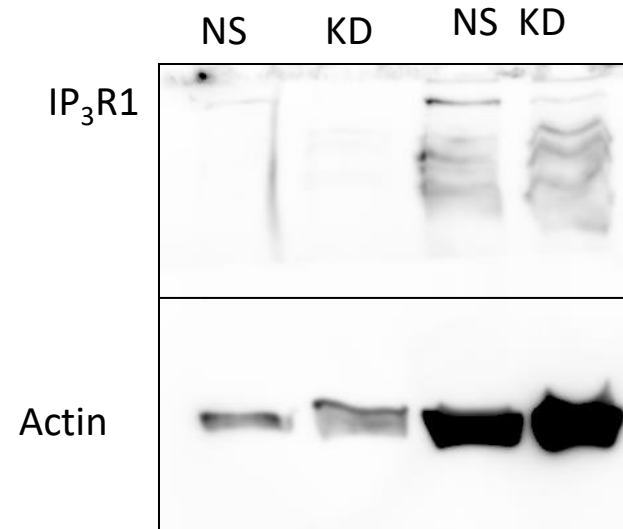
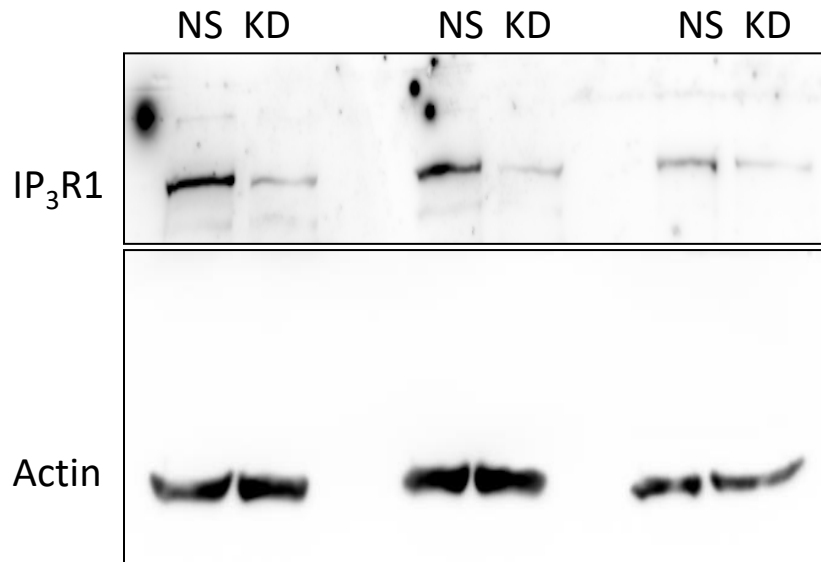


## IP<sub>3</sub>R1 Western blot



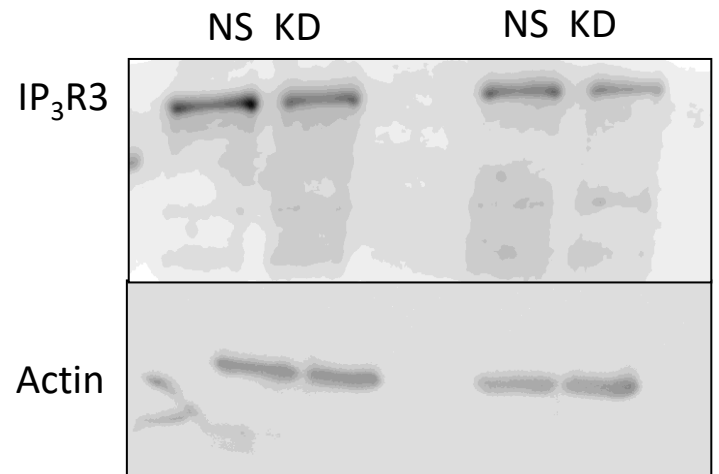
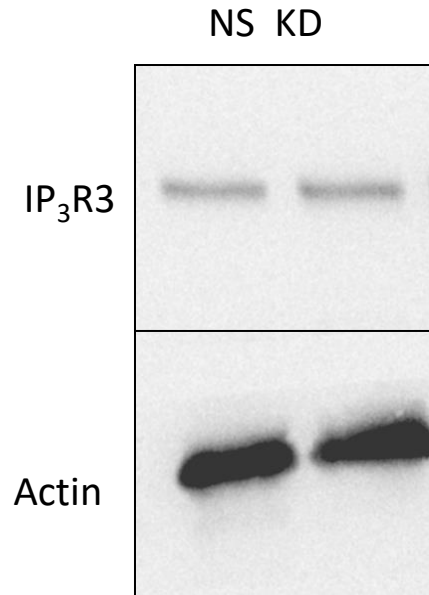
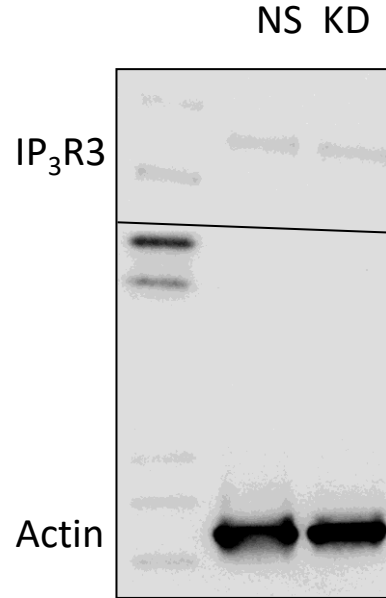
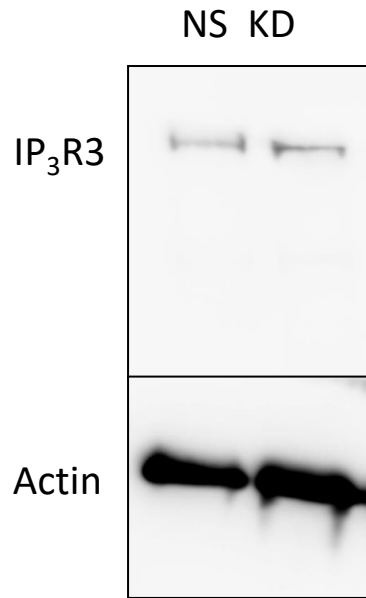
NS- control shRNA (NS shRNA)

KD- IP<sub>3</sub>R1 shRNA

Blots were cut before primary antibody incubation to inhibit cross reactivity.

Every NS and KD indicates individual replicates.

## IP<sub>3</sub>R3 Western blot



NS- control shRNA (NS shRNA)

KD- IP<sub>3</sub>R1 shRNA

Blots were cut before primary antibody incubation to inhibit cross reactivity.

Every NS and KD indicates individual replicates.